

EXCELLENT

ELECTRIC BIKES FOR DELIVERY RIDERS

ELECTRIC BICYCLE
BICICLETA ELÉCTRICA
ELEKTRISCHES FAHRRAD
VÉLO ÉLECTRIQUE
BICICLETTA ELETTRICA
ELEKTRISCHE FIETS



EXCELLENT

EXCELLENT

WHO WE ARE



Excellent technology is an e-bike manufacturer with over 10-year experience, specialized in delivery e-bikes, a stable supplier for many overseas food delivery platforms and fleet leasing operators. Our products serve more than 30 countries worldwide, providing professional e-bikes for commercial food delivery scenarios. We are glad to share our experience and address the pain point together with our customers.



Core Advantages

1

Independent Technology & In-house Mould Capability

We boast full in-house mould development and manufacturing capability. This allows us to efficiently complete customized production, quickly meet personalized demands from different markets, and guarantee stable product accuracy and reliable quality.

2

In-depth Adaptation for Overseas Leasing Models

With over 10 years of experience in the overseas market, we have in-depth research on various electric vehicle leasing operation modes, and have made exclusive design for leasing scenarios: reinforced frames adapt to high-frequency and high-intensity use, modular design facilitates maintenance and replacement, and we support multiple operation schemes such as intelligent connectivity and battery swapping, helping operators reduce full-life cycle cost and improve operation efficiency.

3

Comprehensive After-sales Guarantee

We provide systematic maintenance training and 24-hour technical response to guarantee customers worry-free operation, and our customer repurchase rate exceeds 95%.

4

4.Free consultation

We provide free consultation,are open to explore more business model and profitability.

Key Users and Applications



01

Uber Eats, DoorDash, & Deliveroo Couriers:

These riders use e-bikes to speed up deliveries and operate in high-congestion zones where cars are slow.



02

Full-time & Part-time Gig Workers:

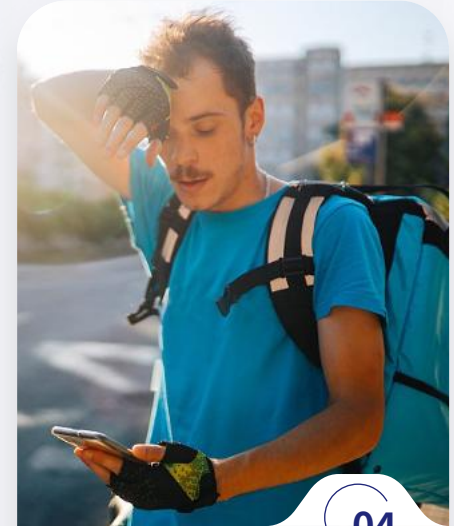
More viable and efficient option for maximizing income, compared to traditional bikes, allowing for longer shifts without exhaustion.



03

Restaurant & Local Businesses:

Businesses like pizza shops (e.g., Domino's) and bakeries utilize e-cargo bikes for local deliveries, reducing fuel costs and emissions.



04

Urban Delivery Associates:

Companies like Amazon are increasingly employing e-bike delivery riders in densely populated cities to improve logistics speed.



Why e-bikes



■ **SPEED IN TRAFFIC**

■ **REDUCED EFFORT
& INCREASED RANGE**



■ **LOWER OPERATING COSTS**

■ **INCREASED CAPACITY**



E-BIKE INTRODUCTION

This is an IoT powered e-bike, Fleet operator could track their e-bikes via the backstage management. Besides, It could allow users to remote control the e-bikes On/Off. Better choice for your fleet.



OPTIONS



SPECS (RE-01)

Frame	Alloy 6061 ,Durable,20*480 step thru
Range	Up to 60 miles With PAS
Speed	20 Mph
Payload Capacity	440 lbs
Working Mode	TAG+PAS
Weight	31kgs
Charging time	7.5 hrs
Battery	48V20AH 960WH Li-ion battery W/Samsung Cells
Motor	500W brushless gear motor ,60NM
Controller	48V 20A
Display	TFT 2.0 ,Mounted on left handlebar
Charger	48V3A fast charger,4+2 pin,100-240V AC input
Brakes	Hydraulic brakes,180/180mm Rotor,Tektro
Tires	20*3.3,puncture-proof ,CST

DETAILS



E-BIKE INTRODUCTION

Track the e-bikes via the backstage management. Control the e-bikes remotely. Up to 90KM on a single charge (@PAS 1). Enjoy Tektro 2-piston hydraulic brakes, Better e-bike for delivery & Gig workers.

SPECS (RE-02)

Frame	Alloy 6061 ,Durable,26*420 step thru
Range	Up to 55miles With PAS
Speed	20 Mph
Payload Capacity	330 lbs
Working Mode	TAG+PAS
Weight	32.5kgs
Charging time	8.5 hrs
Battery	48V25AH 1200WH Li-ion battery W/Samsung Cells
Motor	500W brushless gear motor ,60NM
Controller	48V 20A
Display	TFT 2.0 ,Mounted on left handlebar
Charger	48V3A fast charger,4+2 pin,100-240V AC input
Brakes	Hydraulic brakes,160/160mm Rotor,Tektro
Tires	26*2.0,puncture-proof ,Kenda



OPTIONS



DETAILS



E-BIKE INTRODUCTION

A commuter-style bike---The RE03 remains one of the most impressive tech packages , bringing alarm, GPS geofencing, 4G connectivity ,APP,Backstage management and more to make this one of the sleekest and most capable commuters on the market.



SPECS (RE-03)

Frame	Alloy 6061 ,Durable,26*480 step thru
Range	Up to 65 miles With PAS
Speed	20 Mph
Payload Capacity	330 lbs
Working Mode	TAG+PAS
Weight	37kgs
Charging time	10 hrs
Battery	48V35AH 1600WH Li-ion battery W/Samsung Cells
Motor	500W brushless gear motor ,60NM
Controller	48V 20A
Display	TFT 2.0 ,Mounted on left handlebar
Charger	48V3A fast charger,4+2 pin,100-240V AC input
Brakes	Hydraulic brakes,180/180mm Rotor,Tektro
Tires	26*2.35,Chaoyang

DETAILS



OPTIONS

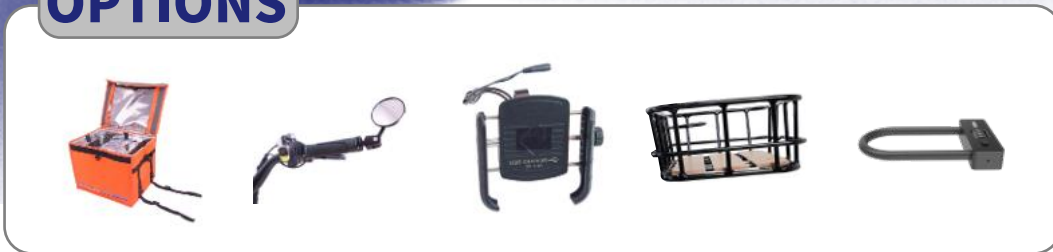


E-BIKE INTRODUCTION

Looking for a delivery ebike ,a real cargo e-bike for heavy load ?The RE04 will be a better choice.Its integated with an IoT device for GPS ,which allow fleet operator to track their e-bikes for real-time locations.A NFC card enter into the menu and a load ability up to 200KGS.



OPTIONS



SPECS (RE-04)

Frame	Alloy 6061 ,Durable,20*480 step thru
Range	Up to 65 miles With PAS
Speed	20 Mph
Payload Capacity	450 lbs
Working Mode	TAG+PAS
Weight	38kgs
Charging time	5 hrs
Battery	48V35AH 1600WH Li-ion battery W/Samsung Cells
Motor	500W brushless gear motor ,60NM
Controller	48V 20A
Display	TFT 2.0 ,Mounted on left handlebar
Charger	48V7A fast charger,4+2 pin,100-240V AC input
Brakes	Hydraulic brakes,180/180mm Rotor,Tektro
Tires	20*4.0,puncture-proof ,Chaoyang

DETAILS



For different scenarios and requirements, we offer different product solutions.

- Typical E-bikes (Basic)
- E-bikes+ GPS tracker(Premium)
- E-bikes +GPS tracker+NFC+motor Lock(Pro)
- IoT powered E-bikes+APP+Backend management+Cloud Server(Max)

COMPARE LIST

	Basic	Premium	Pro	Max
Durability	Yes	Yes	Yes	Yes
Anti-theft	*U lock	* U lock *GPS tracker	*U lock *GPS tracker *Motor Lock *Motion-based alerts	*U lock *GPS tracker *Remote Motor Lock *Motion-based alerts * navigation
Safety&Fireproofing	Samsung cells &certificated battery	Samsung cells &certificated battery	Samsung cells &certificated battery	Samsung cells &certificated battery
Geo-fencing	N/A	N/A	N/A	To Be Developed(sentry)
APP	N/A	N/A	N/A	Yes,White label(subscription)
Backend management	N/A	*Real-time location *ON/OFF remotely	*Dash Board *Real-time location *Vehicle management *ON/OFF remotely	*Dash Board *Store management *Vehicle management *Order management *Tickets management *Team Management *Users Management *Real-time locations *Navigation (Lock/Unlock remotely control)
Communication	UART	UART	UART	CAN BUS
API Ready	N/A	N/A	N/A	Supported

PREMIUM

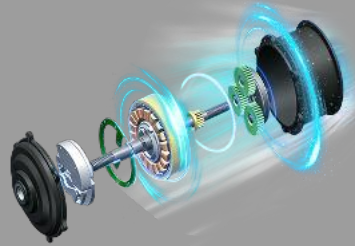
There is a GPS tracker which is hidden in the frame, fleet operator could track the e-bikes via backstage management in real-time, and allow to shut down the e-bike remotely.



GPS

PRO

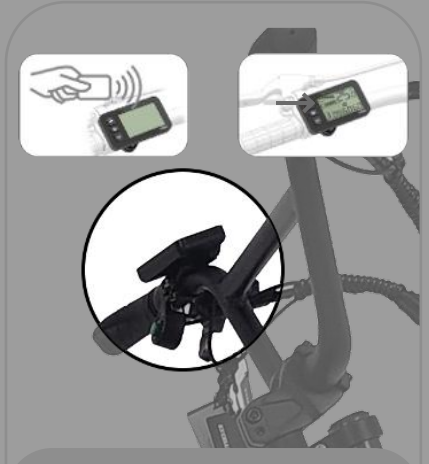
Compared to Premium, This solution did mount a motor with build in digital lock, a NFC card to Enter into the display & Unlock the motor at the same time. Much safer.



Motor lock



GPS & Suspicious movement alerts



NFC

MAX

A Real subscription solution, that connects your e-bike fleet to the platform, making vehicles keyless and trackable through one complete hardware-software solution.



APP

FLEET OPERATIONS MANAGEMENT



BACKEND MANAGEMENT



CLOUD SERVER

YOUR SUBSCRIPTION IN 3 EASY STEPS



Step.1

Visit the rental stores
& download the app

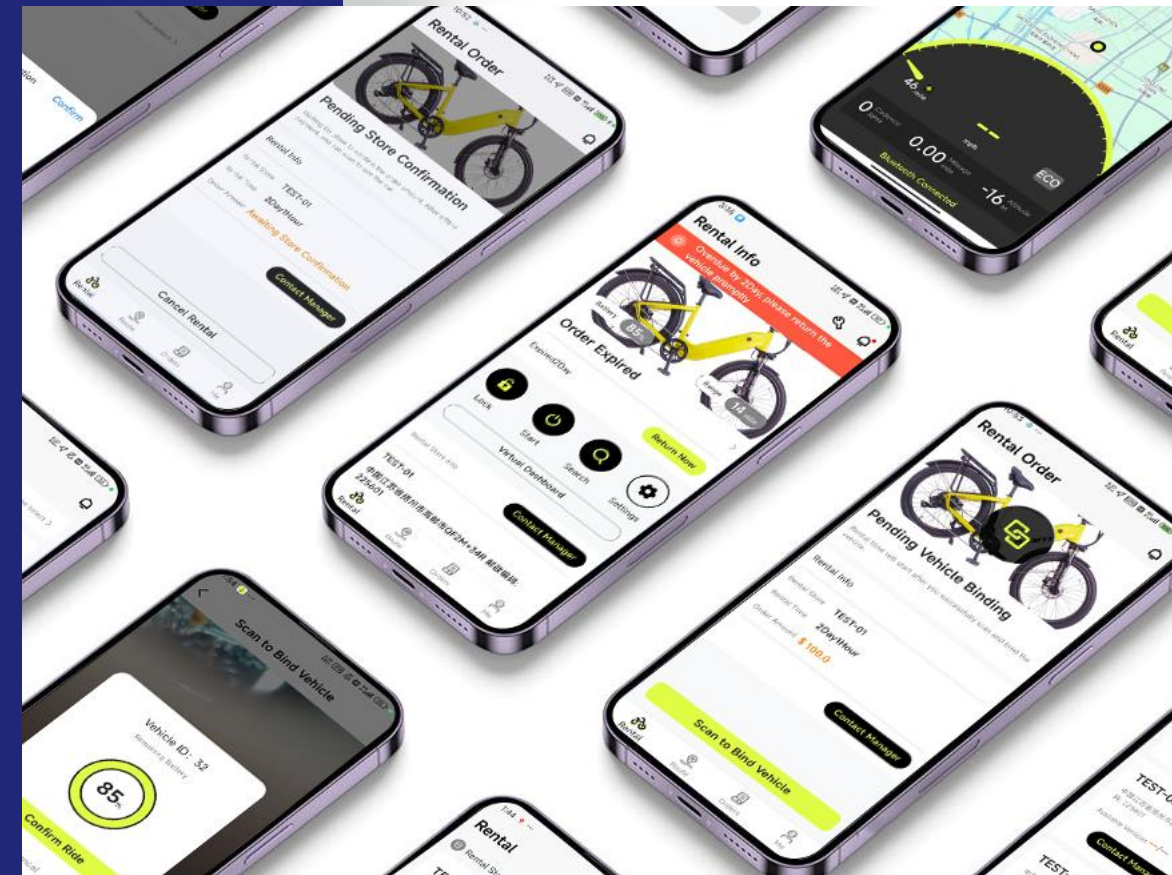
Step.2

Select your plan
(duration&store)

Step.3

Return the e-bikes
to any authorized stores

APP INTRODUCTION



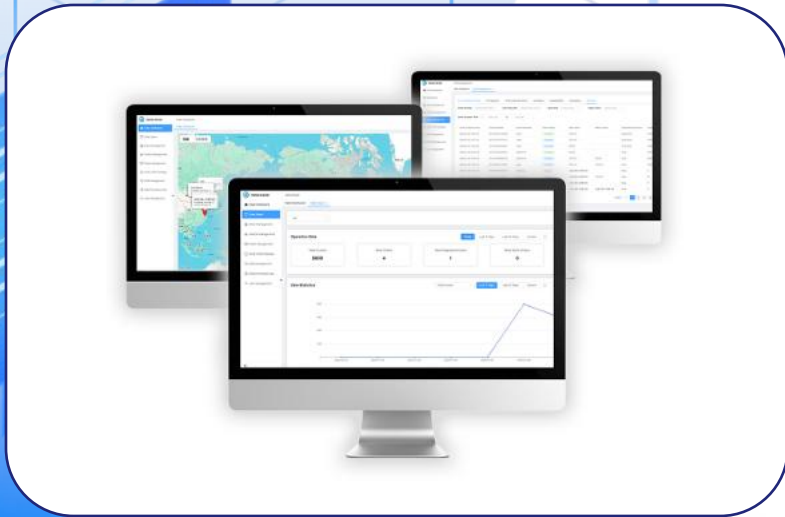
■ RIDER APP

Your Smart phone is the key,Everything at your fingertips the fleet manager offers its customer a safe, serene and fun cycling experience

■ FEATURES

- locking/Unlocking the bike
- Movement Alert notifications
- Search Bike(Sound Alarm+Lights Flashing)
- Remote power Shutdown,Keyless
- Real Time info :Battery Life,remainder range
- Expiration reminder
- Stores address (Rent/Return)
- Rental orders reviews
- Trip history
- Report(Theft/Breakdown)&Tickets Submitted

BACKSTAGE INTRODUCTION



■ BACKSTAGE MANAGEMENT

The core purpose of fleet management software is to help businesses keep track of their vehicles and make sure they're running smoothly. Data collected from each vehicle-such as battery level and location-is communicated to the backend operating system, which in turn sends commands to control vehicle output or access. location-is communicated to the backend operating system, which in turn sends commands to control vehicle output or access.

■ FEATURES

Dashboard--All your stores

Data Board -All data (Total income,New orders,new users,New Tickets,Rental situation)

Store management---Manage the current stores&New stores created

Vehicle management

Order Management

Tickets management

Staff management

user management

PROJECT

EXTENSION



PROJECT NAME: COMBINED WIRELESS&DOCKING STATION ECOSYSTEM

NO.1

Introduction: Wireless e-bike docking stations merge automatic induction charging with heavy-duty mechanical locking mechanisms into a single public infrastructure asset. Instead of using flat ground pads or requiring riders to manually plug in cords, these stations allow users to simply push the front wheel or frame into a secure slot. The moment the bike locks into place, magnetic coils align automatically to start charging, creating an idealized, weather-proof solution for shared micro-mobility and corporate fleets.

PROJECT NAME: E BIKE BATTERY SWAPPING STATION

NO.2

Introduction: E-bike battery swapping stations are smart, automated kiosks that allow riders to instantly exchange a depleted lithium-ion battery for a fully charged one. Operating like an automated vending machine or an "F1 pit stop," this infrastructure eliminates multi-hour charging down-time and removes vehicle range anxiety. It is a foundational technology for urban gig-economy couriers, logistics fleets, and high-utilization micro-mobility networks.





EXCELLENT

YOUR DEPENDABLE DELIVERY E-BIKE SUPPLIER



📍 Add: Room 1508, Block A, Tianning Times Square, Changzhou, Jiangsu, China

☎ Tel: 15261113736

✉ Email: sales@excellent-ebike.com